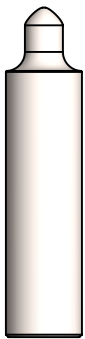
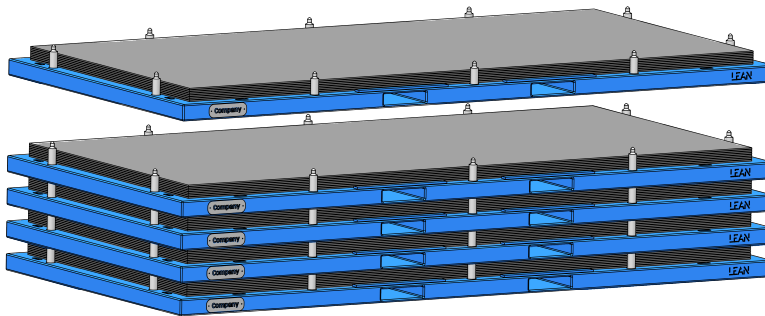


SHEET METAL STORAGE CARTRIDGES

Price, value, return: those are 3 critical components to understand when planning for improvements to your sheet metal storage and handling. Although the cartridges may look very similar from afar, there are some key differentiators that are very important to consider for the flow of your operations.



RE-RACK

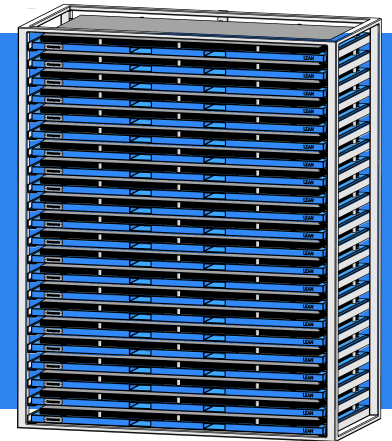


- ✓ Direct stacking using removeable
- ✓ Re Rack pin/bushing combos
- ✓ No cumulative load on raw sheet stocks, thus preventing warping
- ✓ No shifting/sliding cartridges
- ✓ Top sheet is immediately accessible, without moving runners
- ✓ Built to ship to/from suppliers
- ✓ Lined with thru slots for banding
- ✓ Sheets completely contained within framework of cartridge

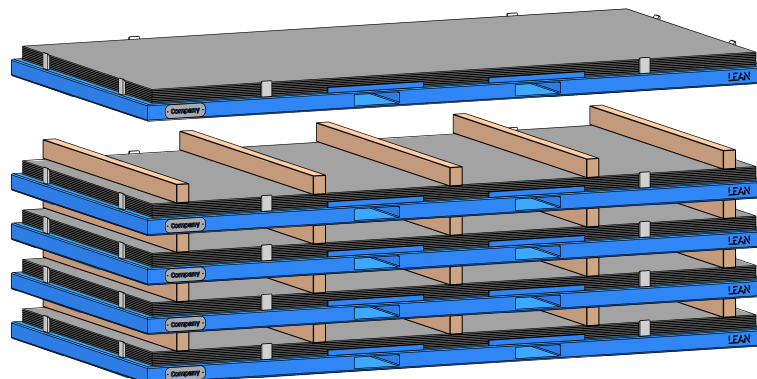
Regardless of Cartridge Style:

- ✓ Sheets contained within perimeter features so sheets cannot slide or shift
- ✓ Sheets always in a tightly stacked, consistent (0,0) home position
- ✓ Oversized (3" x 10") forklift tubes
- ✓ Reinforcement straps over forklift tube opening for increased longevity
- ✓ Your company logo or nameplate included on every cartridge

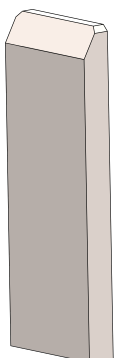
The largest differences come when considering "life outside the rack" in other words, are you stacking cartridges outside the rack? Are you shipping them back and forth with your supplier(s)? Or are they going straight from the high density storage rack to cutting equipment?



- ✓ Supplementary wood is required for stacking
- ✓ Cumulative stacking load is applied to sheet stock
- ✓ Removable Safety Blocks
- ✓ Built for in house storage and handling
- ✓ Sheets completely contained within framework of cartridge



SAFETY BLOCK



No two fabricators are built identically, and we'd love the opportunity to learn about your specific needs, and how we can work together to deliver the best turnkey solution to instantly boost your company's profits.